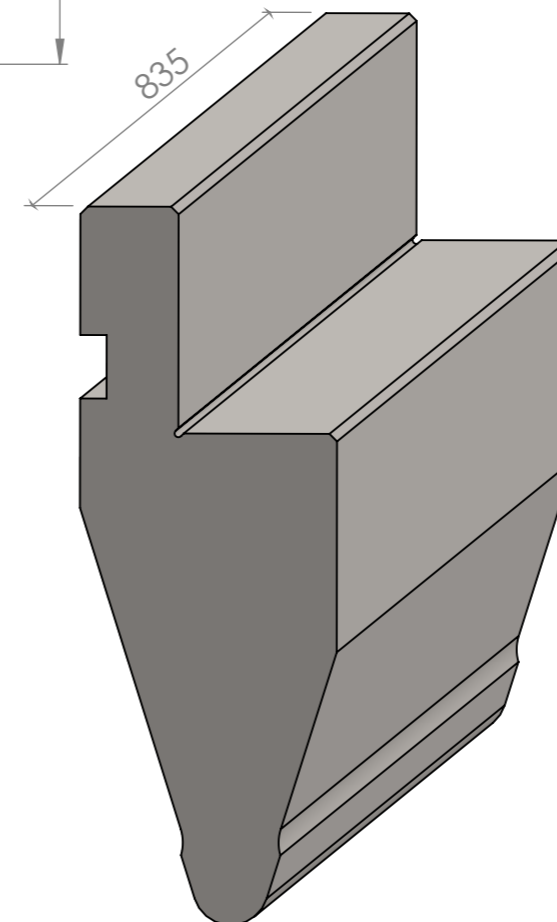
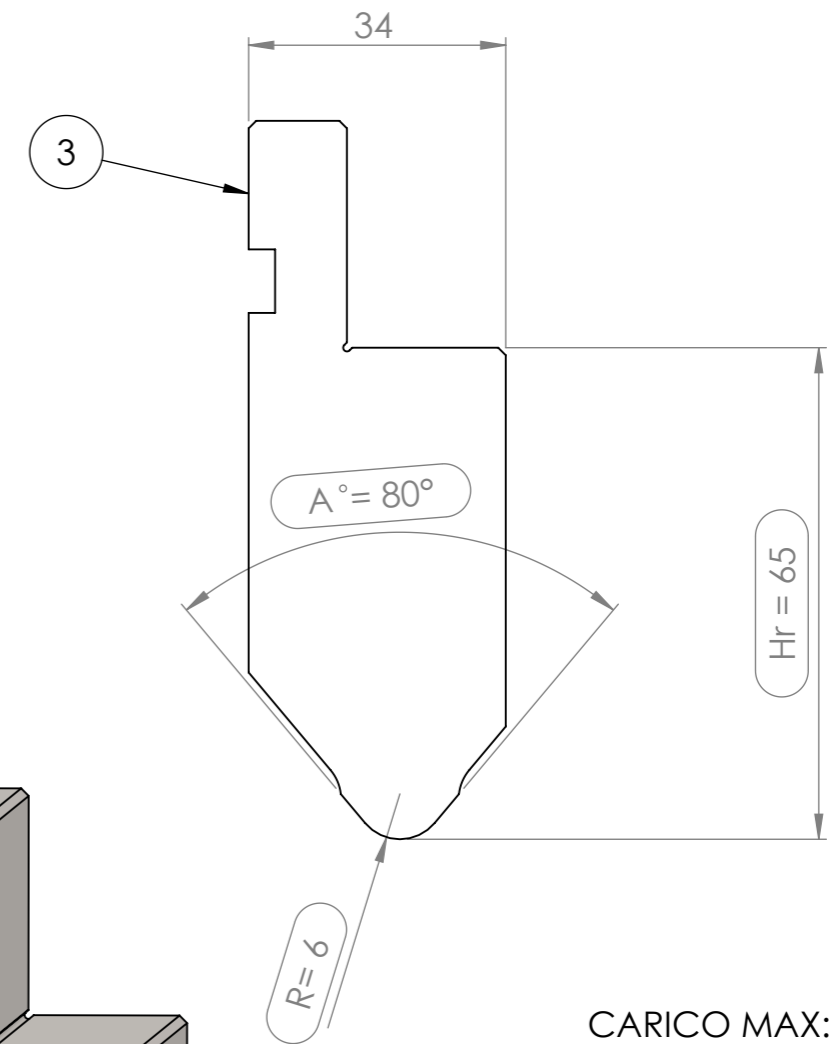
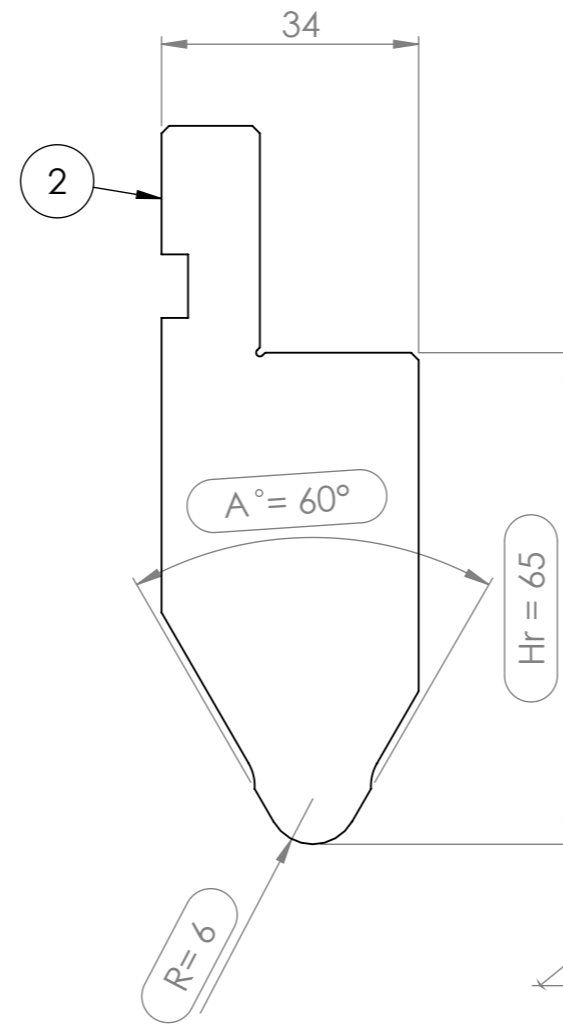
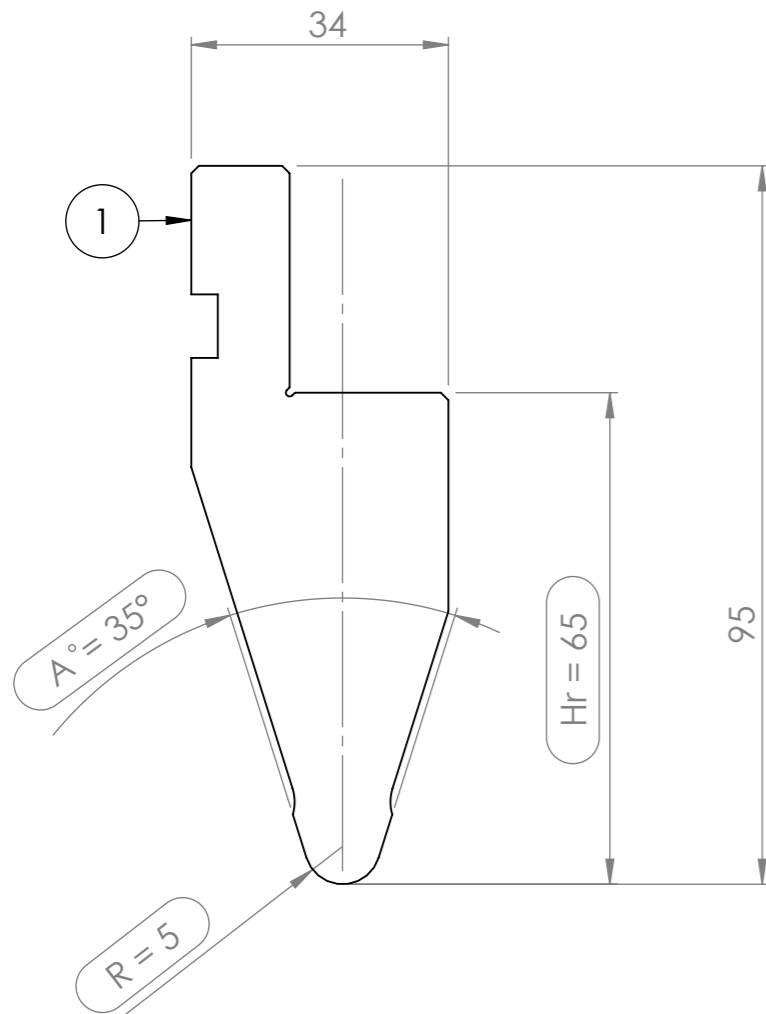


Num. articolo	Num. parte	Materiale	Peso	A°	R	Hr
1	<b>35-R5</b>	1.0503 (C45)	12.379	<b>35°</b>	<b>5</b>	65
2	<b>60-R6</b>	1.0503 (C45)	14.295	<b>60°</b>	<b>6</b>	65
3	<b>80-R6</b>	1.0503 (C45)	14.899	<b>80°</b>	<b>6</b>	65



CARICO MAX: 1600 kN/m

 **parma stamp**  
NOCETO-PR-(ITALY)

**PUNZONE SERIE PS 1013**

MATERIAL  
1.0503 (C45)  
TRATTAMENTO TERMICO  
Temprato a Induzione HRC 52-58