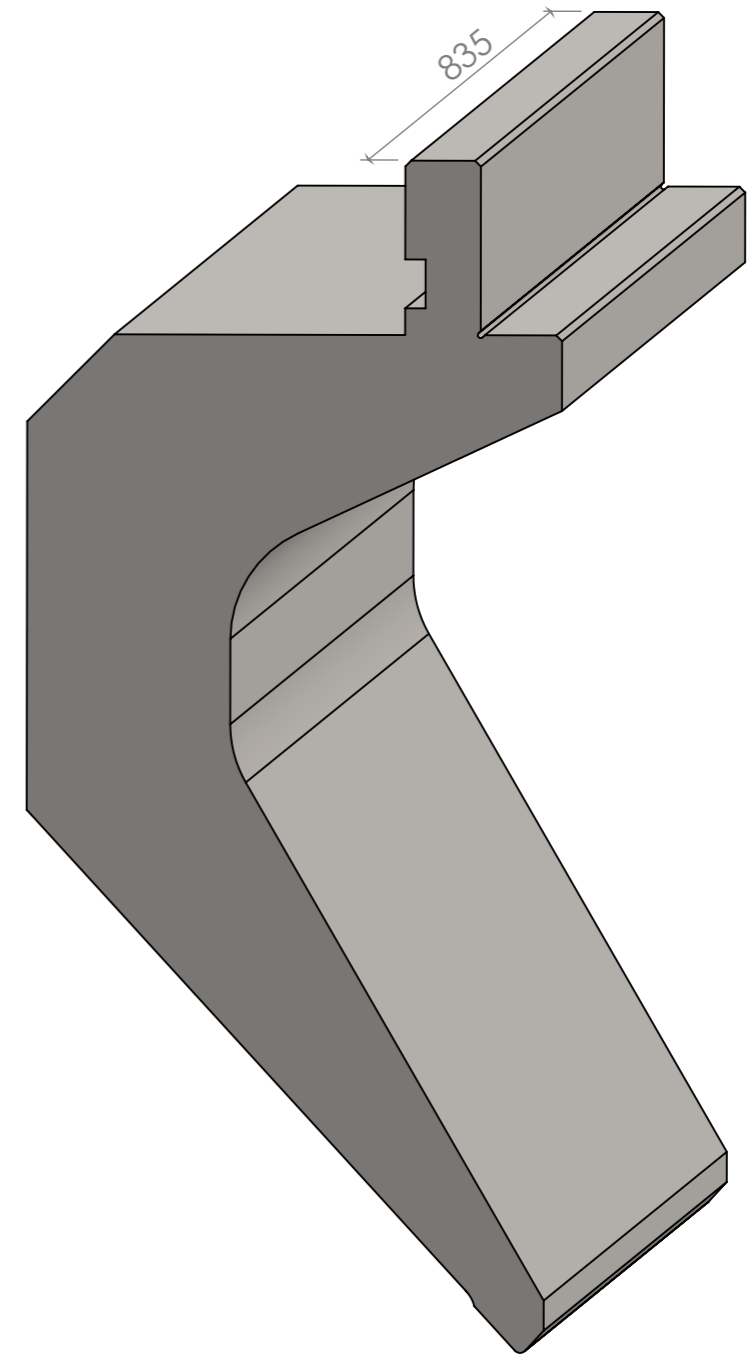
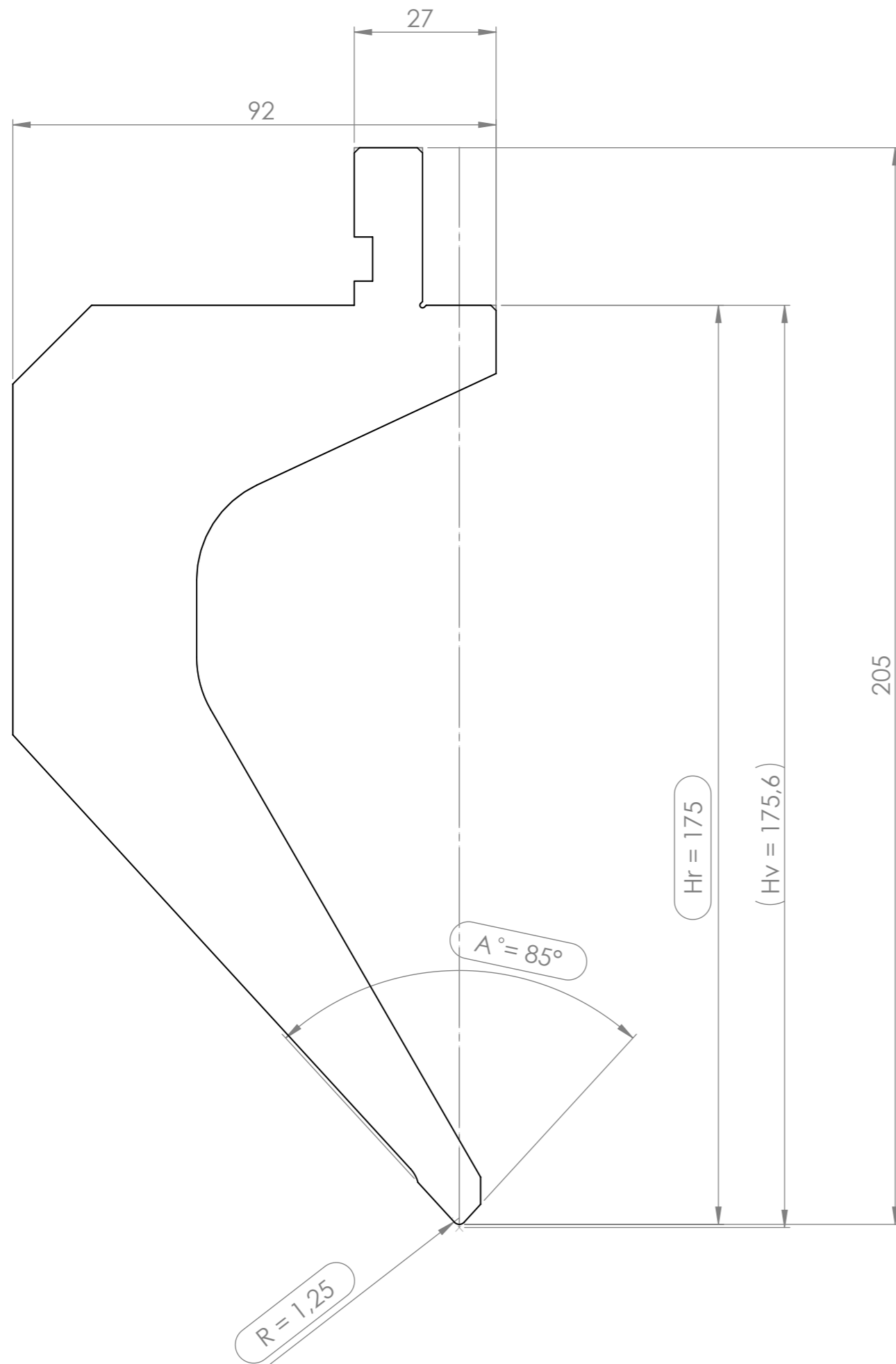


Num. parte	Materiale	Peso	A°	R	Hr	Hv
PS-1046	1.7225 (42CrMo4)	45.193	85°	1,25	175	175,60



CARICO MAX: 900 kN/m

PUNZONE SERIE PS 1046

TRATTAMENTO TERMICO  
Temprato a Induzione HRC 52-58